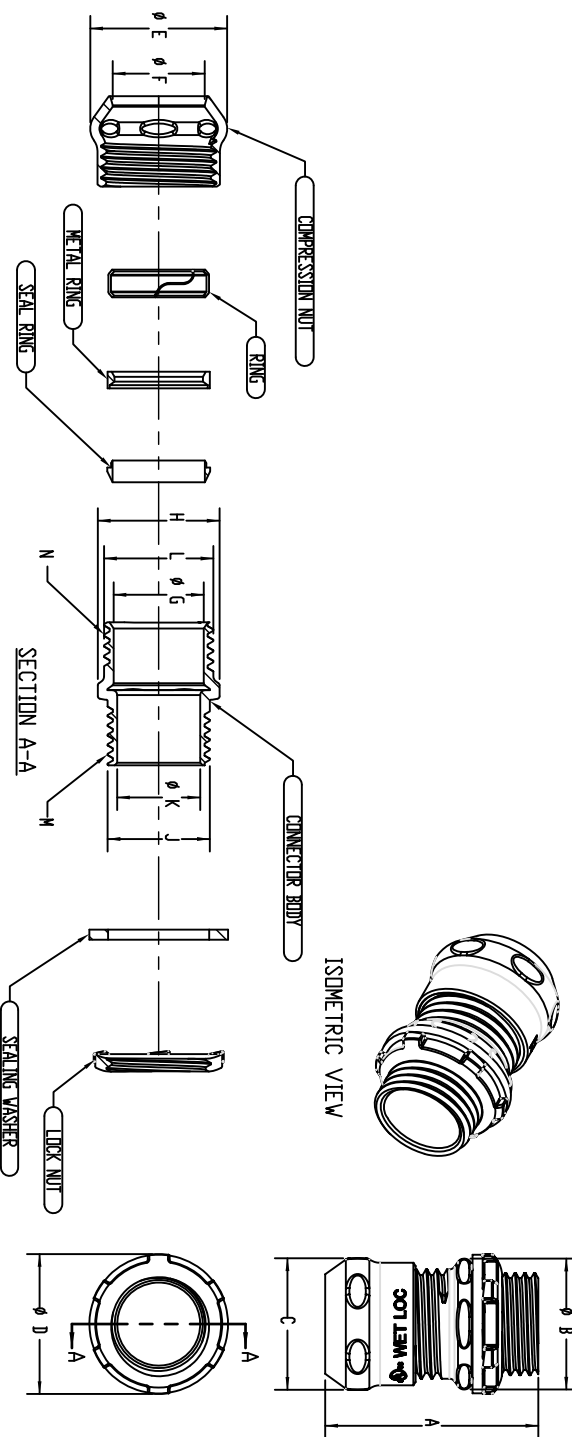


TIGHTENING TORQUE		TIGHTENING TORQUE	
(SEE CLAUSES 6.2.1 817.21, 827.21, 828.2.2, and 828.2.5)			
TRADE SIZE OF FITTING	METRIC DESIGNATOR	TIGHTENING TORQUE (lb-ft-in)	TIGHTENING TORQUE (N-m)
1/4	10	19.8	1.75
3/8	12	22.6	2.00
1/2	16	33.9	3.00
3/4	21	56.5	5.00
1	27	79.1	7.00
1-1/4	35	113	10.00
1-1/2	41	136	12.00
2	53	181	16.00
2-1/2	63	181	16.00
3	78	181	16.00
3-1/2	91	181	16.00
4	103	181	16.00

APPLIES TO FLEXIBLE CONDUIT FITTINGS ONLY
 A 3/8 (12) TRADE SIZE FITTING FOR USE WITH LIQUID-TIGHT FLEXIBLE METAL CONDUIT SHALL BE TIGHTENED WITH A TORQUE OF 25.5 N-M (235 LB-IN).

CAT. #	SIZE	A	B	C	D	E	F	G	H	J	K	L	M	N
CCSR1050	1/2"	1.69 [42.91]	1.04 [26.4]	1.04 [26.4]	1.11 [28.2]	1.09 [27.6]	0.73 [18.5]	0.72 [18.3]	0.97 [24.6]	0.81 [20.6]	0.66 [16.8]	0.87 [22.1]	1/2-14NPSM	0.658-14UNS
CCSR1075	3/4"	1.85 [47.0]	1.31 [33.3]	1.29 [32.8]	1.33 [33.8]	1.39 [35.3]	0.94 [23.9]	0.94 [23.9]	1.20 [30.5]	1.01 [25.7]	0.87 [22.1]	1.08 [27.4]	3/4-14NPSM	1.087-14UNS
CCSR1100	1"	1.95 [49.5]	1.59 [40.4]	1.54 [39.1]	1.71 [43.4]	1.64 [41.7]	1.17 [29.7]	1.18 [30.0]	1.49 [37.8]	1.26 [32.0]	1.12 [28.4]	1.32 [33.5]	1-11.5NPSM	1.331-18UNS
CCSR1125	1-1/4"	2.36 [59.9]	1.99 [50.5]	1.93 [49.0]	2.09 [53.3]	2.03 [51.6]	1.54 [39.1]	1.52 [38.6]	1.83 [46.5]	1.59 [40.4]	1.41 [35.8]	1.70 [43.2]	1-1/4-11.5 NPSM	1.701-14UNS
CCSR1150	1-1/2"	2.40 [61.0]	2.26 [57.4]	2.14 [54.4]	2.37 [60.2]	2.29 [58.2]	1.78 [44.7]	1.76 [44.7]	2.13 [54.1]	1.83 [46.4]	1.64 [41.9]	1.94 [49.3]	1-1/2-11.5 NPSM	1.933-14UNS
CCSR1200	2"	2.54 [64.7]	2.42 [61.6]	2.36 [60.8]	2.63 [66.8]	2.59 [65.6]	2.24 [56.9]	2.21 [56.1]	2.62 [66.5]	2.32 [58.9]	2.12 [53.8]	2.41 [61.2]	2-11.5NPSM	2.398-14UNS
CCSR1250	2-1/2"	3.94 [100.1]	3.64 [93.5]	3.40 [86.4]	3.42 [86.9]	3.62 [91.9]	2.91 [73.9]	2.91 [73.9]	3.34 [84.8]	2.80 [71.1]	2.57 [65.3]	3.14 [79.8]	2-1/2-8NPSM	3.142-11.5UNS
CCSR1300	3"	3.91 [99.3]	4.28 [108.7]	4.05 [102.9]	4.08 [103.4]	4.26 [108.2]	3.55 [90.2]	3.54 [89.9]	3.95 [100.3]	3.43 [87.1]	3.19 [81.0]	3.78 [96.0]	3-8NPSM	3.776-11.5UNS
CCSR1350	3-1/2"	4.11 [104.4]	4.69 [119.1]	4.56 [115.8]	4.71 [119.6]	4.78 [121.4]	4.04 [102.6]	4.04 [102.6]	4.38 [111.3]	3.93 [99.8]	3.69 [93.7]	4.29 [109.0]	3-1/2-8NPSM	4.276-11.5UNS
CCSR1400	4"	4.11 [104.4]	5.28 [134.1]	5.06 [128.5]	5.31 [134.9]	5.31 [134.9]	4.54 [115.3]	4.56 [115.8]	4.92 [125.0]	4.43 [112.5]	4.20 [106.7]	4.79 [121.7]	4-8NPSM	4.776-11.5UNS



- NOTES:
1. ALL DIMENSIONS ARE IN INCHES AND MILLIMETERS!
 2. LOCKNUT SHALL BE HAND-TIGHTENED AND THEN FURTHER TIGHTENED 1/4 TURN WITH A HAMMER AND A FLAT BLADED SCREWDRIVER OR BY AN EQUIVALENT METHOD.
 3. RAIN TIGHT.
 4. CUL LISTED.

REV.	DATE	DESCRIPTION	BY
1	02-23-22	INITIAL RELEASE OF DRAWING	MS

REVISIONS	DESCRIPTION	BY
1	INITIAL RELEASE OF DRAWING	MS

TOLERANCE UNLESS OTHERWISE SPECIFIED	tradeselectr
XX DECIMAL ±.005	DRAWN BY: MS
XXX DECIMAL ±.005	APP. BY: RC
ANGLE ±2°	DATE: 02-23-22
	SCALE: 1:1
	SIZE: B

LIST OF PARTS	DESCRIPTION	MATERIAL	FINISH
SEALING WASHER		NYLON	-
LOCK NUT		STEEL	ZINC
SEAL RING		POLYPROPYLENE	-
METAL RING		STEEL	ZINC
COMPRESSION NUT		STEEL	ZINC
COUPLING BODY		STEEL	ZINC
		STEEL	ZINC

THE DESIGN AND DIMENSIONS OF THE PRODUCT SHOWN ON THIS DRAWING ARE SUBJECT TO CHANGE WITHOUT NOTICE

RainTight Compression Connector
 Uninsulated

SEE CHART FOR CAT. #